



GenericViewer... Your Genius View on Weather Data



ABOUT GenericViewer

The purpose of the **GenericViewer** application is to provide meteorologists and researchers with a powerful tool to integrate all the weather data within the same workstation. It provides the capability to visualize, analyze, and combine various products with each other and with GIS data. The resulting graphical products can be saved in different formats.

The application has the capability to interface with several sources of data such as: GTS, WAFS, MDD, INSAT, IMDPS, METEOSAT, GOES, TIROS, and EEC Radars.

The **GenericViewer** Application is a Linux-PC based solution and is designed around a core module completed with the required Plug-in modules.

Core Module:

The core module provides all the facilities for display, screen navigation, file management and save facilities.

Plug-in Modules:

These modules load all the facilities specific to the ingested data type. They provide the application with the following facilities:

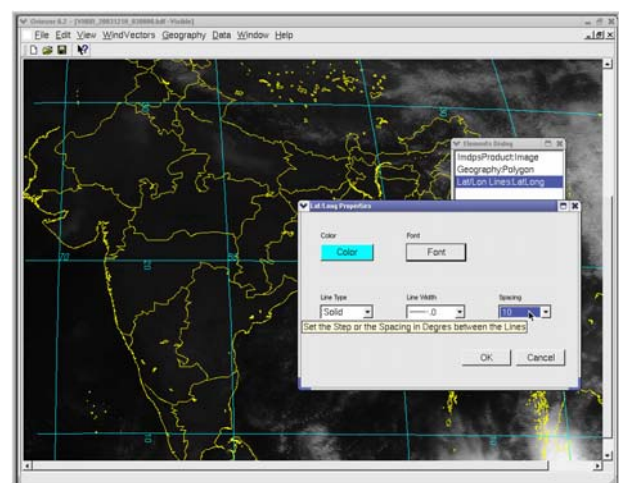
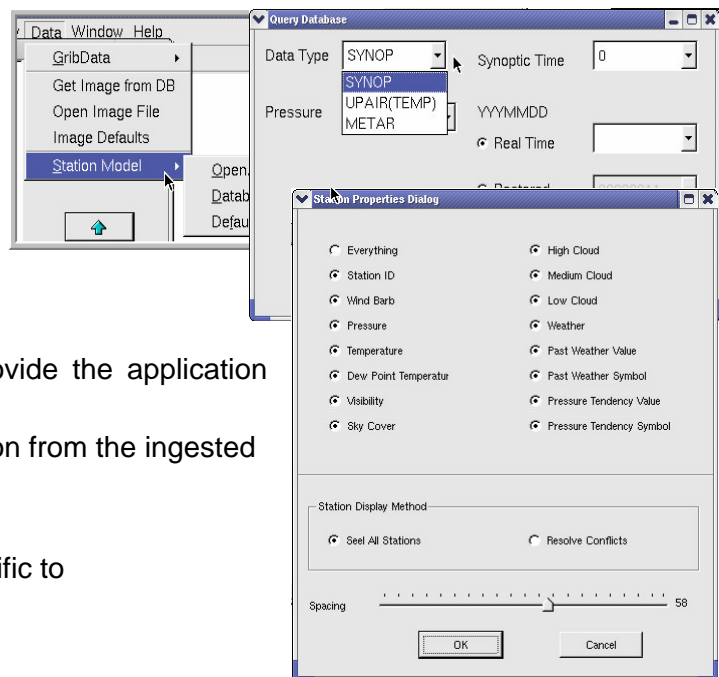
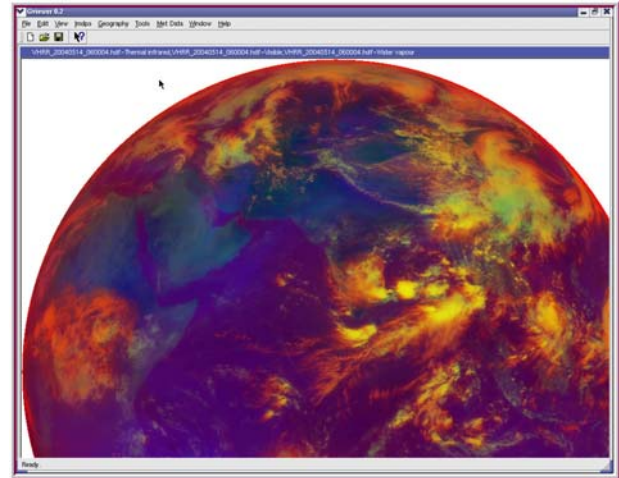
- Interfaces to decode and read the information from the ingested data.
- Query dialog interfaces to display the data.
- Analysis dialog interfaces or programs specific to the data type.

SYSTEM DESCRIPTION

Application Functionality

The application consists of a multiple data type and is able to analyze a full range of meteorological data: Conventional, gridded numerical forecast, radar and satellite data.

- Accesses and analyzes the following satellite data sets: GOES, METEOSAT, TIROS, INSAT, etc...
- Accesses and analyzes GIS data format from GRASS or other GIS packages.
- Performs standard meteorological analysis programs for conventional observation and grid-point data.



- Has a full navigation display and earth positioning is available for every point on the screen.
- Has multi-visualization capabilities to analyze data into grid-point data and transform it into image visualization.
- Performs graphic overlays and data combination of all the supported data.
- Supports re-mapping of images into other coordinate projections.
- Supports multi-frames and windows for image and graphic display along with multiple windows for text.
- Has the capabilities to store images and graphics in internal memory for quick redisplay and for combining displays into an animation.
- Provides a schedule and pre-programmed macros to allow automatic analyses at a user specified time.

Environment Specification:

Based on Linux platform. It can access local and remote data from network file systems and SQL databases on any platform.

Designed to be multilingual. The application is Web enabled; it does produce Web supported product formats (html, gif, jpeg). In the future version, we plan to develop a Web interface to query and retrieve the generated products.

Supported Data Inputs:

• Met Products

WMO Alphanumeric Bulletins, GRIB, BUFR, Satellite Images from INSAT, METEOSAT, GOES and TIROS, Derived Satellite products, NEXDAR products, etc...

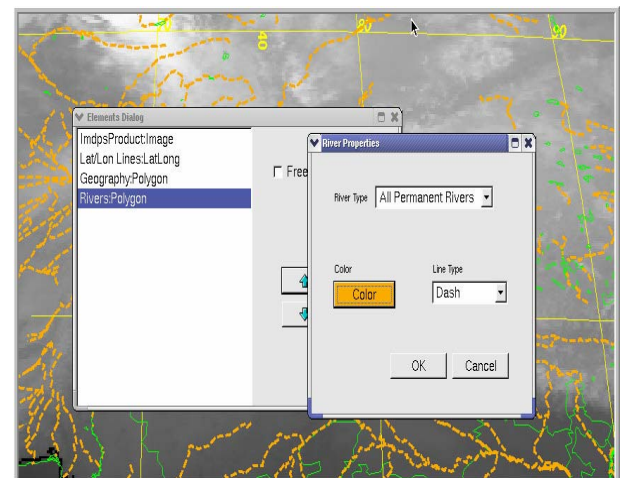
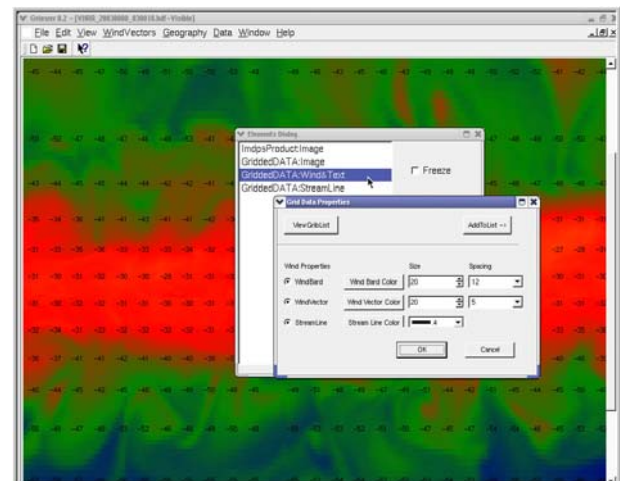
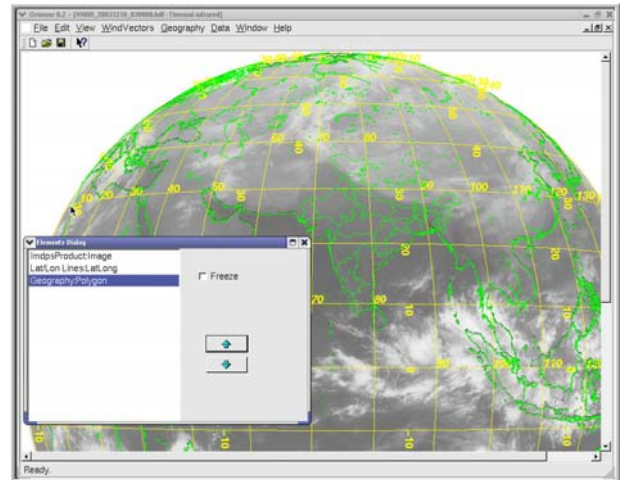
• GIS Data

Oceanography, Topography, River Basins, Roads, Ground Occupation, Political Boundaries, etc...

Product Outputs:

The application generates the following as displays and printouts:

- **Displays:** Multi- windows display, Text and Graphical display, Gray scale and full color display
- **Printouts:** Selectable paper size, Postscript files, Generates HPGL for HP Design Jet Plotter, Generates GIF, TIFF, JPEG, HTML, PCX, HDF formats, Generates Shapefile format for GIS interface.



Info-Electronics Systems Inc.
 1755 St-Régis, Suite 100, Dollard-des-Ormeaux
 Montréal, Québec, Canada H9B 2M9
 (514) 421 0767
 (514) 421 0769
 contact@info-electronics.com